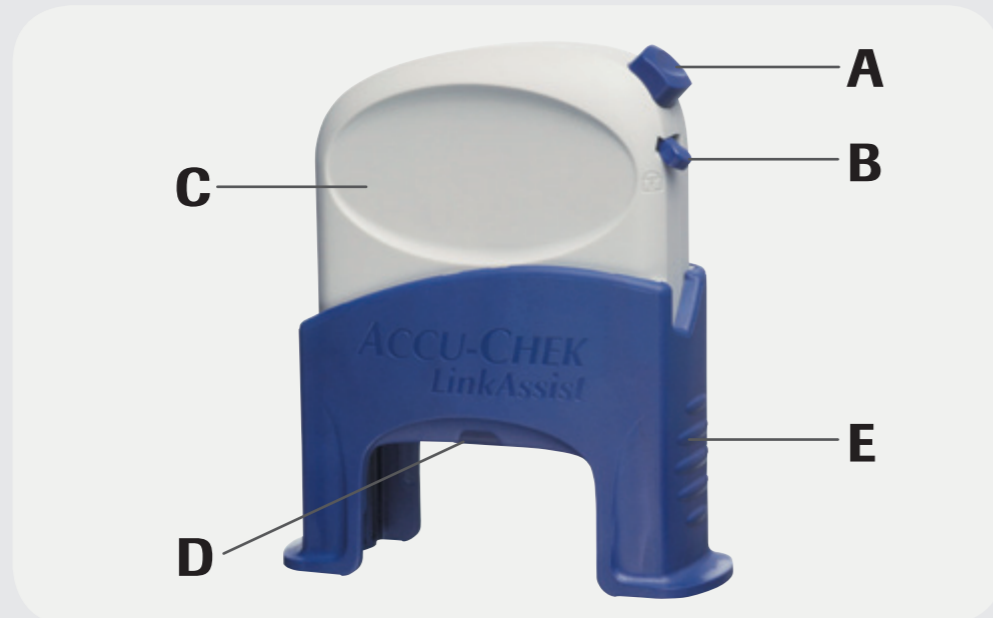




Accu-Chek® LinkAssist Training Chart

The Accu-Chek LinkAssist insertion device to insert your Accu-Chek FlexLink infusion set easily and virtually pain-free even at hard to reach infusion sites.



A Release button **D** Loading chamber
B Safety catch **E** Base
C Tensioning element



1 Before unpacking your infusion set, wash your hands thoroughly. Push the tensioning element of the insertion device into its base.



2 Insert the infusion set from below into the loading chamber until it locks into place.



3 Remove the transparent protective cover of the infusion set by turning and pulling at the same time.



4 Remove both pieces of the self-adhesive backing from the self-adhesive.



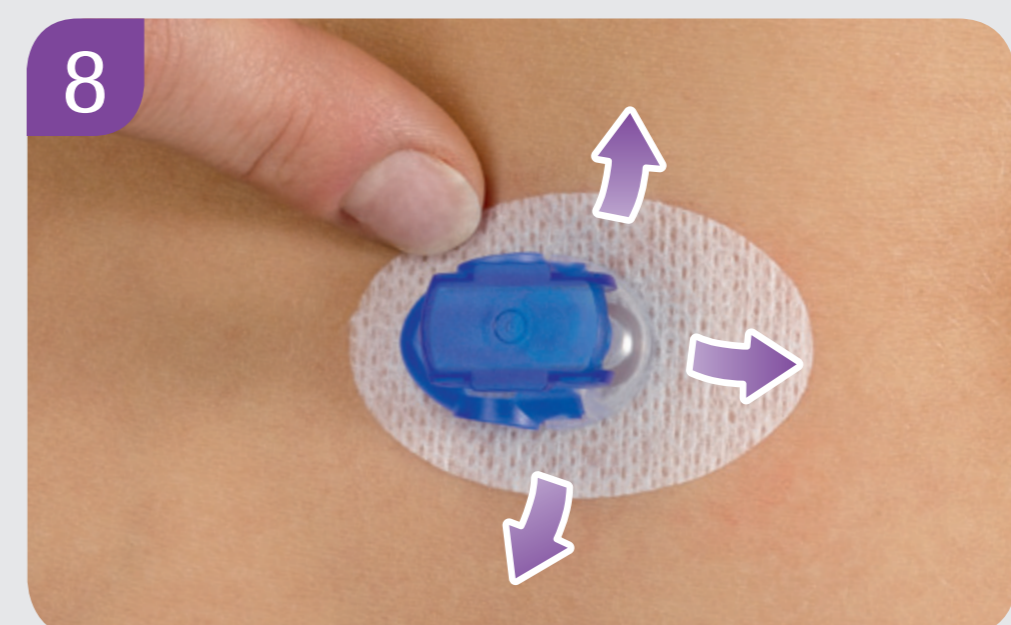
5 Pull the tensioning element out as far as it will go.



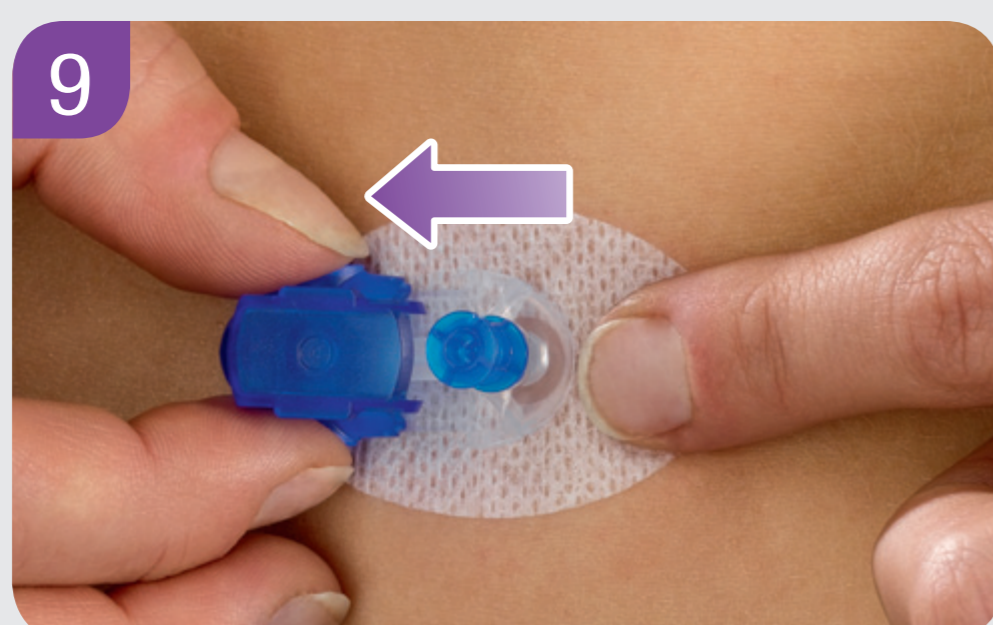
6 Slide the safety catch out of the «lock» position.



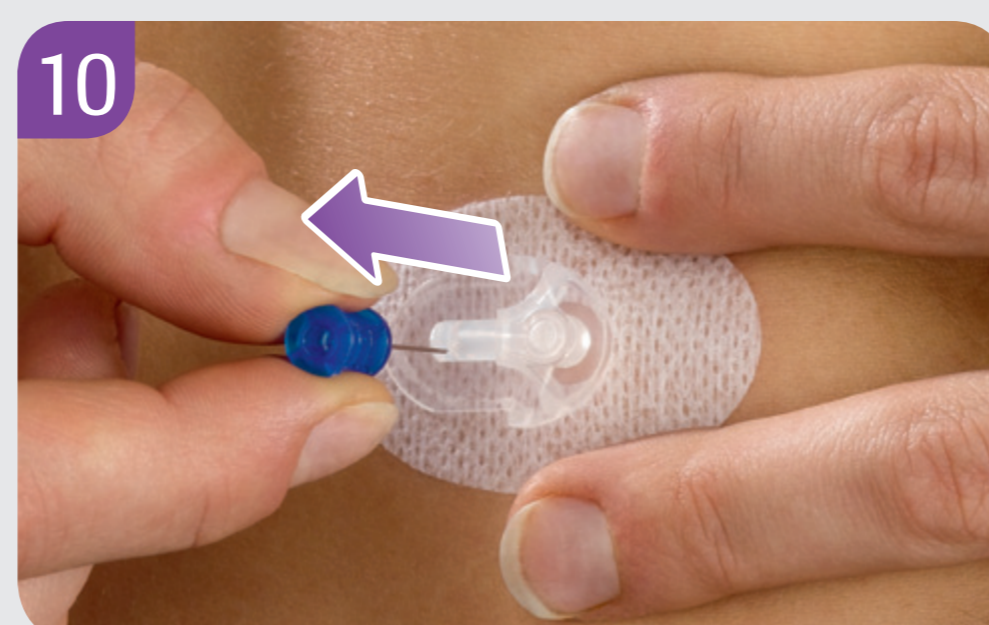
7 Position the insertion device onto the prepared infusion site. Press the release button. Then remove the insertion device.



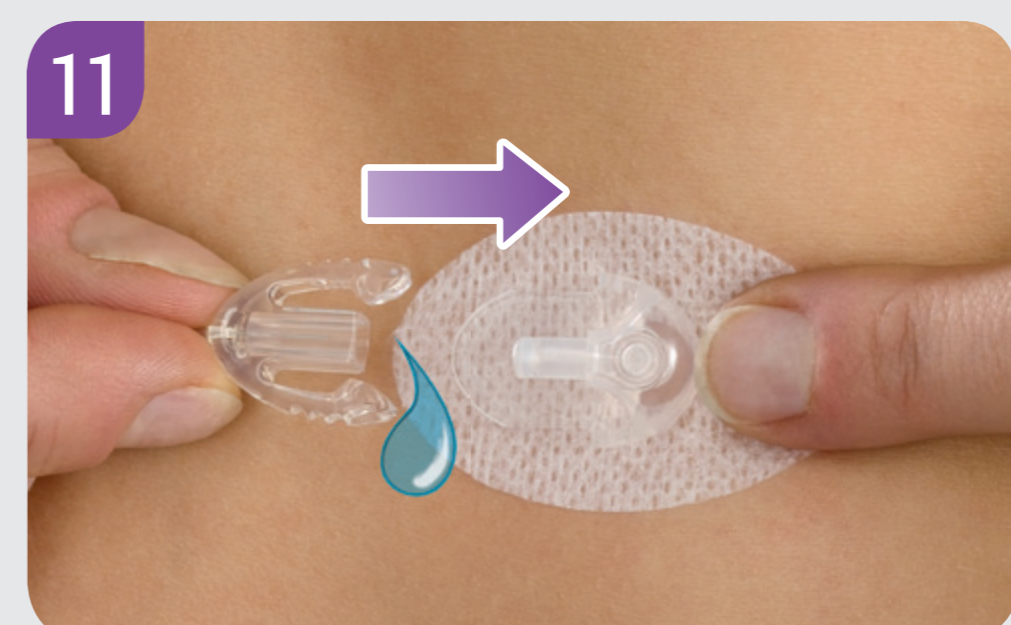
8 Press the adhesive plaster firmly onto the infusion site, ensuring that it makes good contact with the skin.



9 Hold the self-adhesive in place, gently press the side clips of the blue holder cap and pull it from the cannula housing.



10 Hold the cannula housing firmly to your body. Use the handle to withdraw the introduce needle in a right angle.



11 Connect the primed transfer set to the connector plate. Before resuming insulin pump therapy, use an insulin bolus of 1.0 U to fill the head set and the soft cannula.

For detailed instructions and important safety information, please consult the instruction accompanying this product and the infusion set.

Experience what's possible.

ACCU-CHEK, ACCU-CHEK FLEXLINK and ACCU-CHEK LINKASSIST are trademarks of Roche.
 © 2012 Roche Diagnostics



www.accu-chek.com
 Roche Diagnostics GmbH
 Sandhofer Strasse 116
 68305 Mannheim, Germany

ACCU-CHEK®